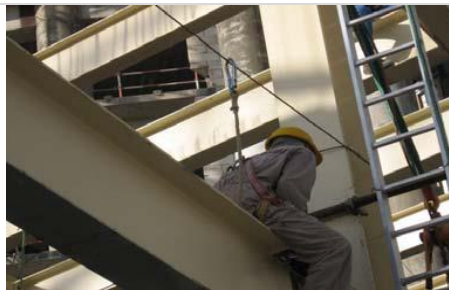


Guidelines – Working at Height



Guidelines – Working at height



RISK ASSESSMENT / PERMIT TO WORK

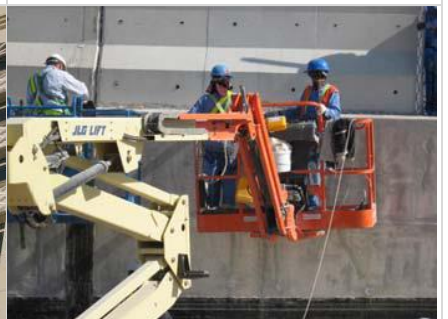
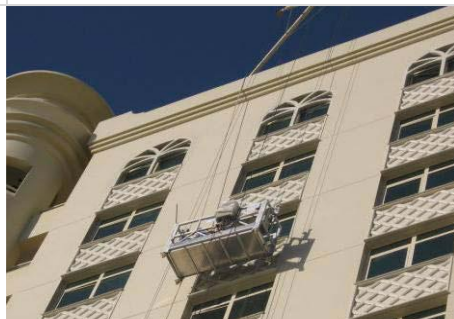
SAFE WORK PRACTICES

TRAINING

- Ensure that Risk Assessment (RA) & Method Statement have been completed prior to carrying out the work at height.
- Hazards involved and safety precautions to be taken shall be communicated to workers involved in working at height.
- In special cases ensure that permit to work is obtained prior to starting the work at height.
- Follow hierarchy of controls in Trakhees-Regulations & Standards.

- Ensure that proper safety arrangements have been made for working at height.
- Ensure all the control measures identified in the Risk Assessment (RA) are implemented at site & safe work practices are followed.
- Provide life line where proper platform cannot be provided.
- Cordon off the area where work at height is carried out & provide warning signage.
- Construct work platforms as per the guidelines given under Chapter 8 of DM Code of Construction.

- Working at height shall be carried out by experienced & trained workers.
- Record of induction training & tool box talks shall be maintained.
- If new person is appointed they shall carry out work under the supervision of an experienced worker.
- Medically unfit persons must not be engaged to work at height.
- Training in use of safety harness should be given to workers.



USE PPE & DISPLAY NOTICES

EMERGENCY ARRANGEMENTS

USE OF EQUIPMENT & TESTING

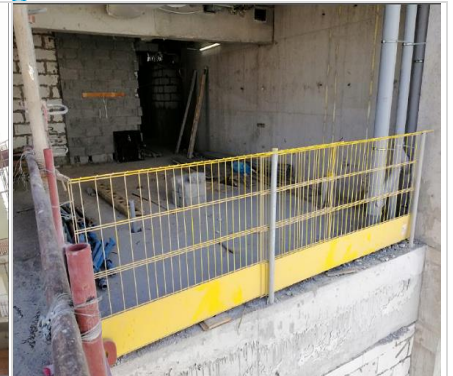
- It is a responsibility of the main contractor to issue required PPE to all the workers.
- If proper working platforms cannot be provided, use full body harness having attachment of fall arresting device.
- Display notices in languages easily understood by workers.

- Risk Assessment must detail emergency procedures including rescue of any person suspended by their safety harness within 10 minutes.
- Display names & contact numbers of the persons to be contacted in case of an emergency.

- Equipment such as hydraulic lifters or scissor lifts should be utilized where there is a space constraint.
- Equipment like temporary suspended working platform (cradle) shall be tested through a Trakhees Approved third party.



Guidelines – Working at height



FALLING OF DEBRIS & CONSTRUCTION MATERIALS

- Building under construction must be provided with green Net/Mesh, around the periphery of each elevations with adequate support.
- Appropriate safety nets shall be used to protect employees from fall hazards and suitable safety nets for protecting the objects from fall hazards.

DAMAGING NEIGHOURING FACILITIES

- Specific Risk assessments and Method statements to cover work at height activities and must convey communication to all workforces about the risks and hazards involved..
- Contractors are required to provide necessary protection precautionary at construction sites to safeguard and protect neighbouring plots/facilities.
- Unfenced/unprotected construction areas can cause debris to fall and cause damage to neighbouring facilities

BARRIERS / RAILINGS

- Rigid barriers/ railings are required to be provided in all leading edges, shafts and openings to ensure no risk of fall.